



Footfall Report for: St Peter Port, Guernsey

Weekly Footfall Counts

	Year to date %		Year on year %		Week on week %	
	2026	2025	2026	2025	2026	2025
St Peter Port, Guernsey	1.4%	2.7%	-1.2%	7.8%	2.0%	-6.2%
South West	3.0%	-3.3%	-0.3%	0.3%	-3.1%	2.0%
UK	-2.4%	1.0%	-6.3%	-0.5%	-3.1%	1.1%

Benchmark calculations (Year on Year and Week on Week) have been calculated using like for like data sets (only those counters available in both comparison periods) to ensure statistical accuracy

Headlines

The total number of visitors to St Peter Port, Guernsey for the last 52 weeks is 13,489,377 which is 0.6% up on the previous year.

The total number of visitors for the year to date is 4,398,612 which is 1.4% up on the previous year.

The total number of visitors to St Peter Port, Guernsey in week commencing 11 May 2026 was 262,511.

The busiest day in week commencing 11 May 2026 was Saturday with 50,850 visitors.

The peak hour of the week was 11:00 on Saturday 16 May 2026 with footfall of 6,378.

Footfall Counts by week

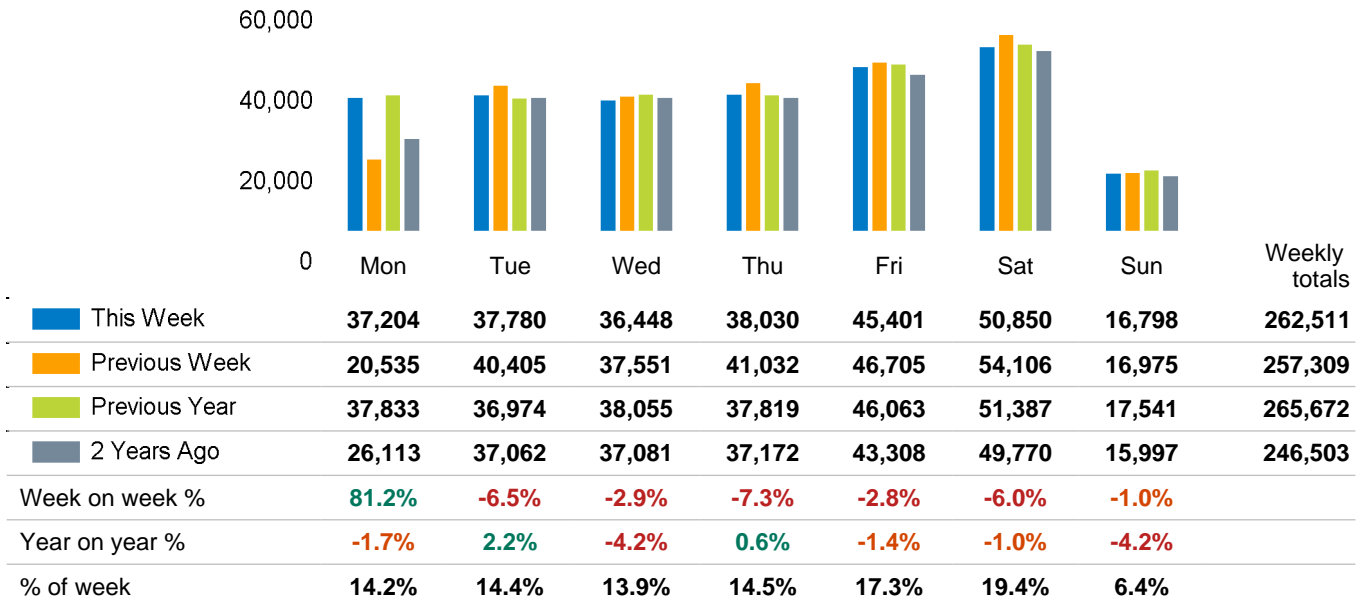


■ This Week ■ Previous Year
■ Previous Week ■ 2 Years Ago

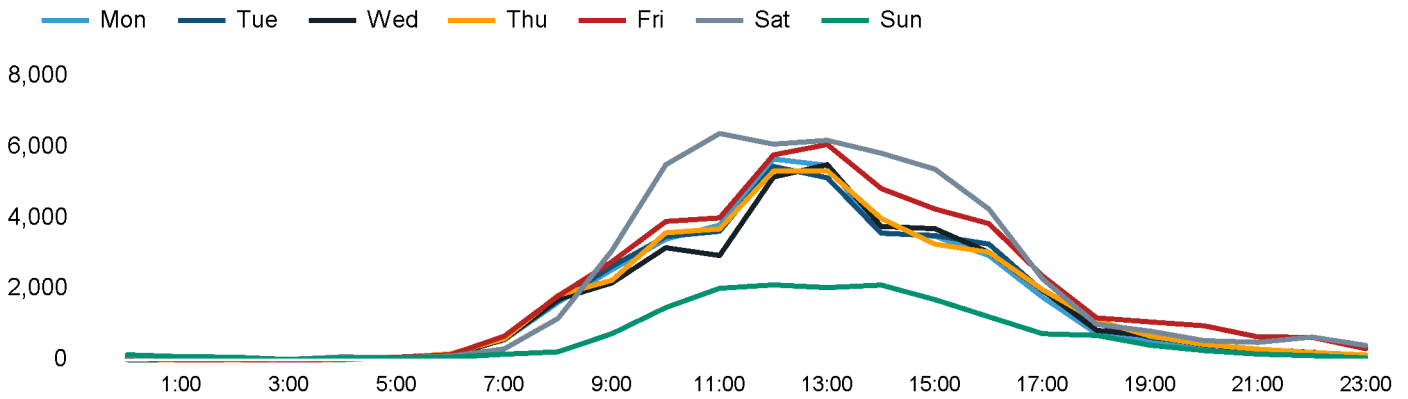
Weather

	Mon	Tue	Wed	Thu	Fri	Sat	Sun
This week	14°	15°	15°	14°	14°	14°	14°
Previous week	16°	16°	15°	16°	18°	18°	18°
Previous year	21°	23°	22°	20°	19°	18°	22°

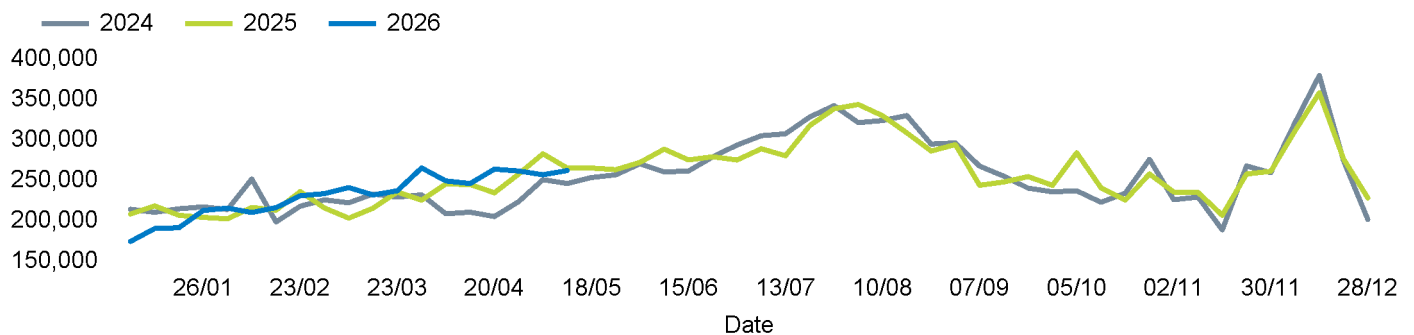
Footfall Counts by day



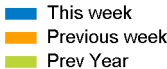
Footfall Counts by hour



Footfall Counts by week



Footfall Counts by location

	This week	% share of total week	Previous week	Previous year	Week on week %	Year on year %	
Commercial Arcade at High Street, Eastbound	20,204	7.7%	19,084	19,717	5.9%	2.5%	
Commercial Arcade at High Street, Westbound	16,467	6.3%	15,021	15,971	9.6%	3.1%	
High Street at Commercial Arcade, Northbound	33,482	12.8%	33,515	35,200	-0.1%	-4.9%	
High Street at Commercial Arcade, Southbound	35,698	13.6%	34,071	36,862	4.8%	-3.2%	
Market Square from Market Steps	33,382	12.7%	35,343	33,715	-5.5%	-1.0%	
Market Square from the Arcade	18,874	7.2%	17,850	18,579	5.7%	1.6%	
Market Square from the Church	16,340	6.2%	17,198	18,273	-5.0%	-10.6%	
The Pollet at High Street, Northbound	28,945	11.0%	28,368	29,644	2.0%	-2.4%	
The Pollet at High Street, Southbound	30,727	11.7%	28,030	31,124	9.6%	-1.3%	
The Pollet at Smith Street, Eastbound	15,187	5.8%	15,477	14,207	-1.9%	6.9%	
The Pollet at Smith Street, Westbound	13,205	5.0%	13,352	12,380	-1.1%	6.7%	



Reporting dates

This week - 11 May 2026 - 17 May 2026

Year to Date % change is the annual % change in footfall from week 1 of the current reporting year compared to the same period last year.
05 January 2026 - 17 May 2026 vs 06 January 2025 - 18 May 2025

Year on year % change is the % change for this week compared to the same week in the previous year.
11 May 2026 - 17 May 2026 vs 12 May 2025 - 18 May 2025

Week on week % change is the % change for this week compared to the previous week.
11 May 2026 - 17 May 2026 vs 04 May 2026 - 10 May 2026

