



Footfall Report for: St Peter Port, Guernsey

Weekly Footfall Counts

	Year to date %		Year on year %		Week on week %	
	2026	2025	2026	2025	2026	2025
St Peter Port, Guernsey	1.5%	2.4%	-9.2%	12.7%	-1.8%	9.7%
South West	3.2%	-3.5%	4.4%	-6.3%	0.1%	-1.8%
UK	-2.2%	1.1%	-2.5%	-3.0%	-6.5%	-6.4%

Benchmark calculations (Year on Year and Week on Week) have been calculated using like for like data sets (only those counters available in both comparison periods) to ensure statistical accuracy

Headlines

- The total number of visitors to St Peter Port, Guernsey for the last 52 weeks is 13,492,538 which is 0.8% up on the previous year.
- The total number of visitors for the year to date is 4,136,101 which is 1.5% up on the previous year.
- The total number of visitors to St Peter Port, Guernsey in week commencing 4 May 2026 was 257,309.
- The busiest day in week commencing 4 May 2026 was Saturday with 54,106 visitors.
- The peak hour of the week was 13:00 on Friday 8 May 2026 with footfall of 6,414.

Footfall Counts by week

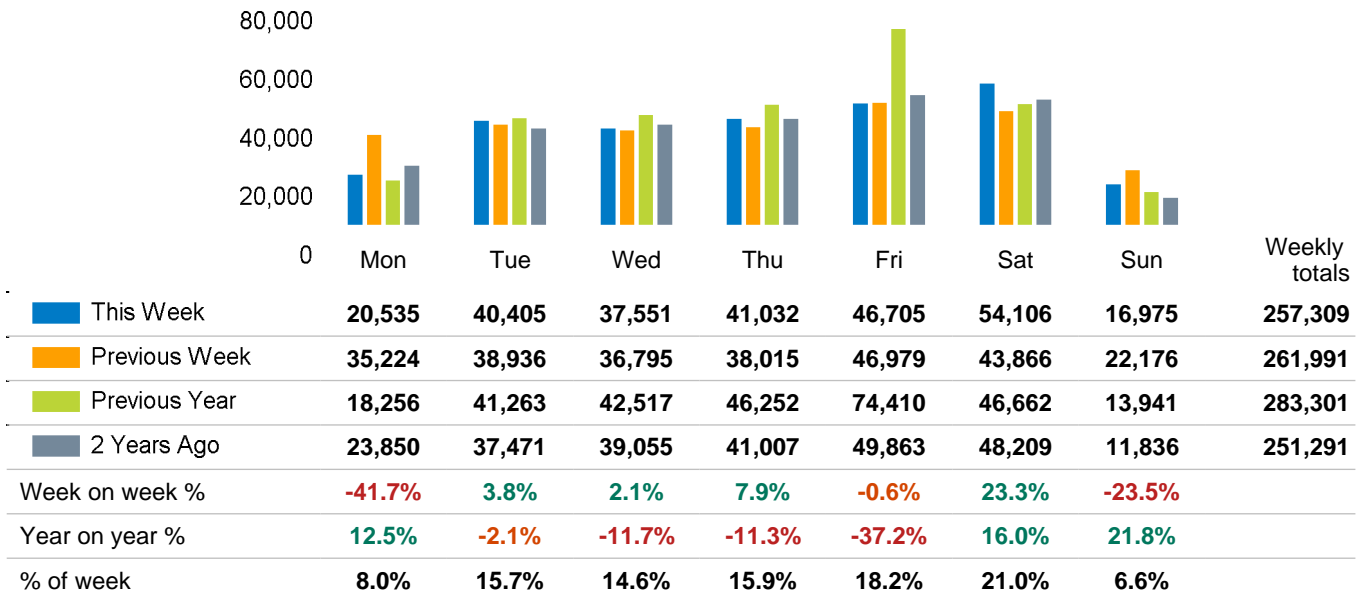


■ This Week ■ Previous Year
■ Previous Week ■ 2 Years Ago

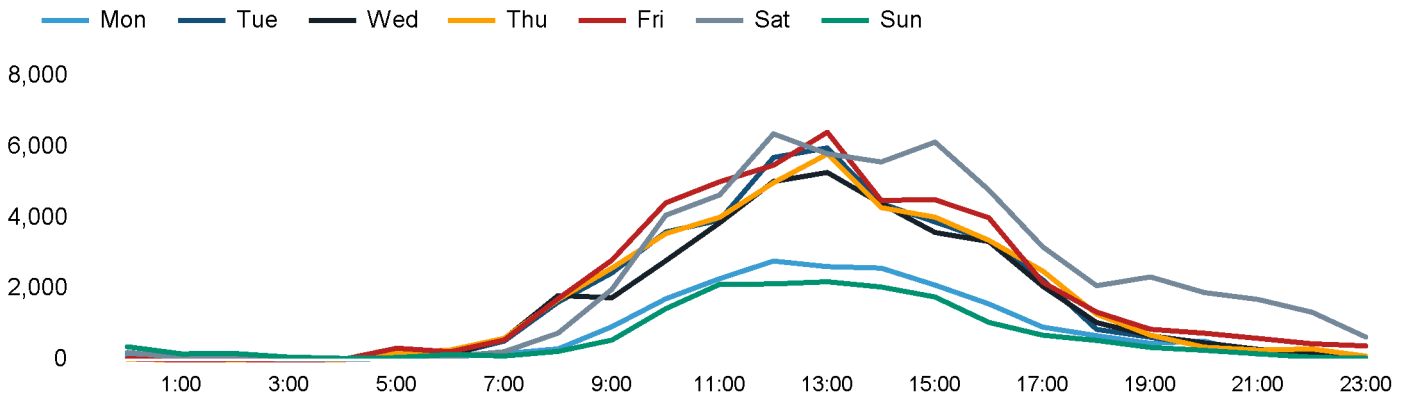
Weather

	Mon	Tue	Wed	Thu	Fri	Sat	Sun
This week	16°	16°	15°	16°	18°	18°	13°
Previous week	19°	17°	14°	21°	21°	17°	16°
Previous year	15°	15°	16°	16°	17°	20°	23°

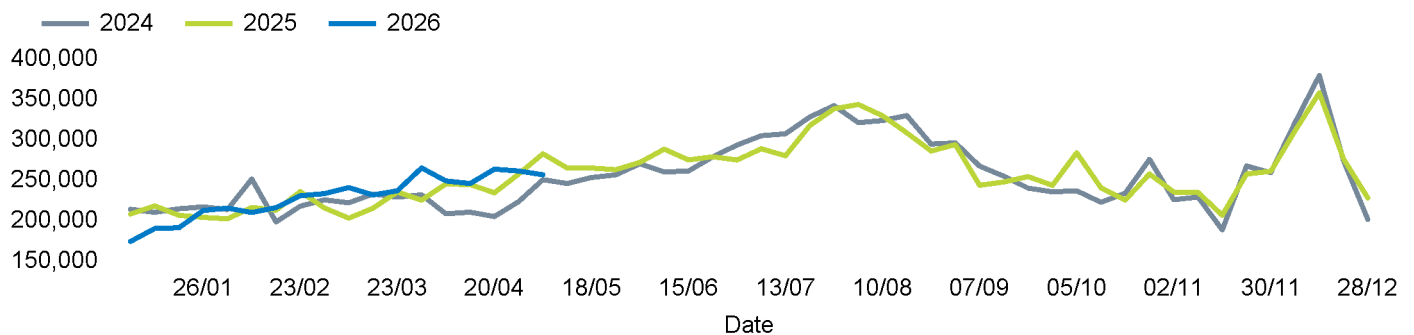
Footfall Counts by day



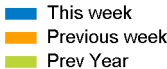











Footfall Counts by hour



Footfall Counts by week



Footfall Counts by location

	This week	% share of total week	Previous week	Previous year	Week on week %	Year on year %	
Commercial Arcade at High Street, Eastbound	19,084	7.4%	19,708	21,180	-3.2%	-9.9%	
Commercial Arcade at High Street, Westbound	15,021	5.8%	15,893	16,970	-5.5%	-11.5%	
High Street at Commercial Arcade, Northbound	33,515	13.0%	34,012	37,449	-1.5%	-10.5%	
High Street at Commercial Arcade, Southbound	34,071	13.2%	36,054	39,349	-5.5%	-13.4%	
Market Square from Market Steps	35,343	13.7%	37,924	36,892	-6.8%	-4.2%	
Market Square from the Arcade	17,850	6.9%	19,182	18,678	-6.9%	-4.4%	
Market Square from the Church	17,198	6.7%	15,397	18,469	11.7%	-6.9%	
The Pollet at High Street, Northbound	28,368	11.0%	27,681	32,361	2.5%	-12.3%	
The Pollet at High Street, Southbound	28,030	10.9%	29,094	32,015	-3.7%	-12.4%	
The Pollet at Smith Street, Eastbound	15,477	6.0%	14,552	16,322	6.4%	-5.2%	
The Pollet at Smith Street, Westbound	13,352	5.2%	12,494	13,616	6.9%	-1.9%	



Reporting dates

This week - 04 May 2026 - 10 May 2026

Year to Date % change is the annual % change in footfall from week 1 of the current reporting year compared to the same period last year.
05 January 2026 - 10 May 2026 vs 06 January 2025 - 11 May 2025

Year on year % change is the % change for this week compared to the same week in the previous year.
04 May 2026 - 10 May 2026 vs 05 May 2025 - 11 May 2025

Week on week % change is the % change for this week compared to the previous week.
04 May 2026 - 10 May 2026 vs 27 April 2026 - 03 May 2026

