



Week 31, 2025. 28 Jul 2025 - 03 Aug 2025

# Footfall Report for: St Peter Port, Guernsey

## Weekly Footfall Counts

	Year to date %		Year on year %		Week on week %	
	2025	2024	2025	2024	2025	2024
St Peter Port, Guernsey	1.4%	-7.5%	-1.1%	7.6%	6.5%	4.3%
South West	-3.4%	-3.1%	-1.0%	-2.9%	2.5%	0.8%
UK	0.6%	-0.8%	0.7%	2.5%	-0.3%	-2.7%

Benchmark calculations (Year on Year and Week on Week) have been calculated using like for like data sets (only those counters available in both comparison periods) to ensure statistical accuracy

## Headlines

The total number of visitors to St Peter Port, Guernsey for the last 52 weeks is 13,395,727 which is 0.2% down on the previous year.

The total number of visitors for the year to date is 7,704,876 which is 1.4% up on the previous year.

The total number of visitors to St Peter Port, Guernsey in week commencing 28 July 2025 was 338,926.

The busiest day in week commencing 28 July 2025 was Thursday with 57,036 visitors.

The peak hour of the week was 13:00 on Thursday 31 July 2025 with footfall of 8,515.

## Footfall Counts by week

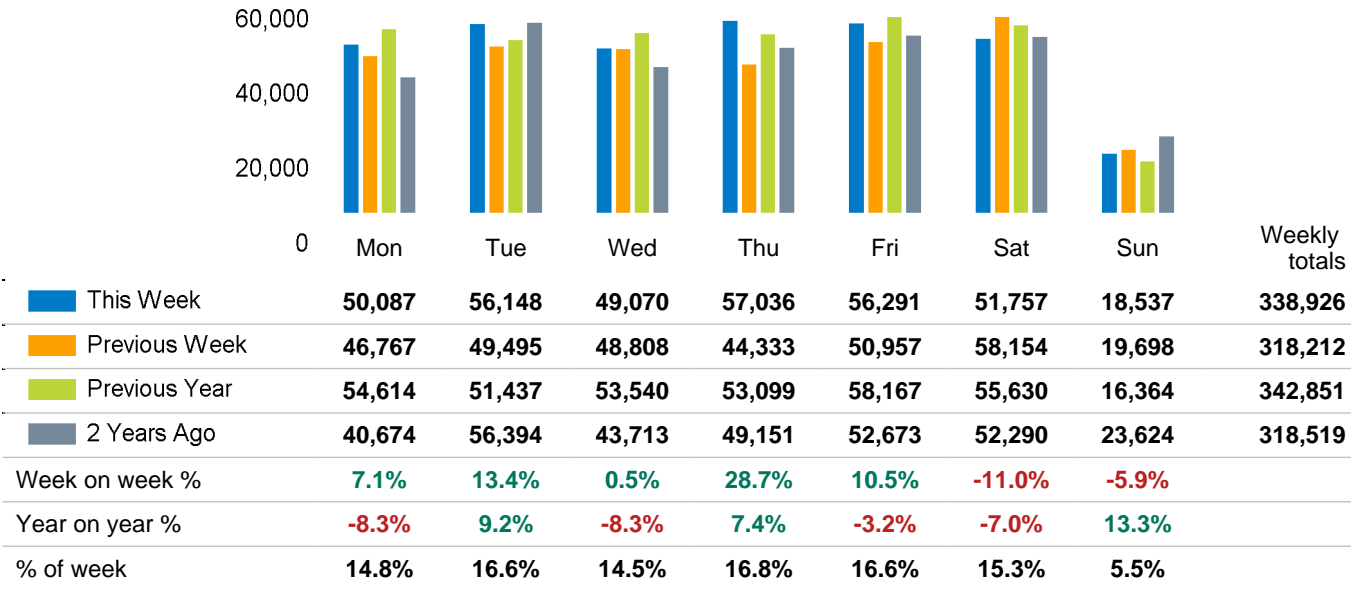


This Week  
Previous Week  
Previous Year  
2 Years Ago

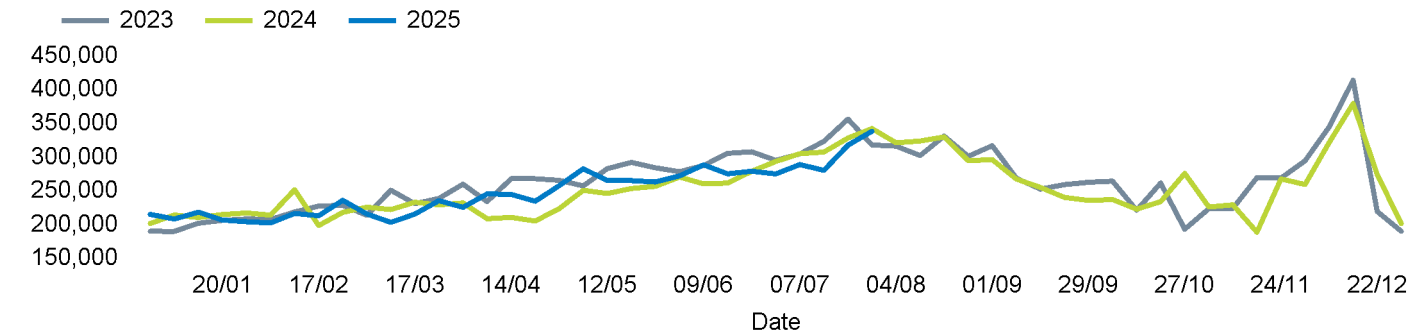
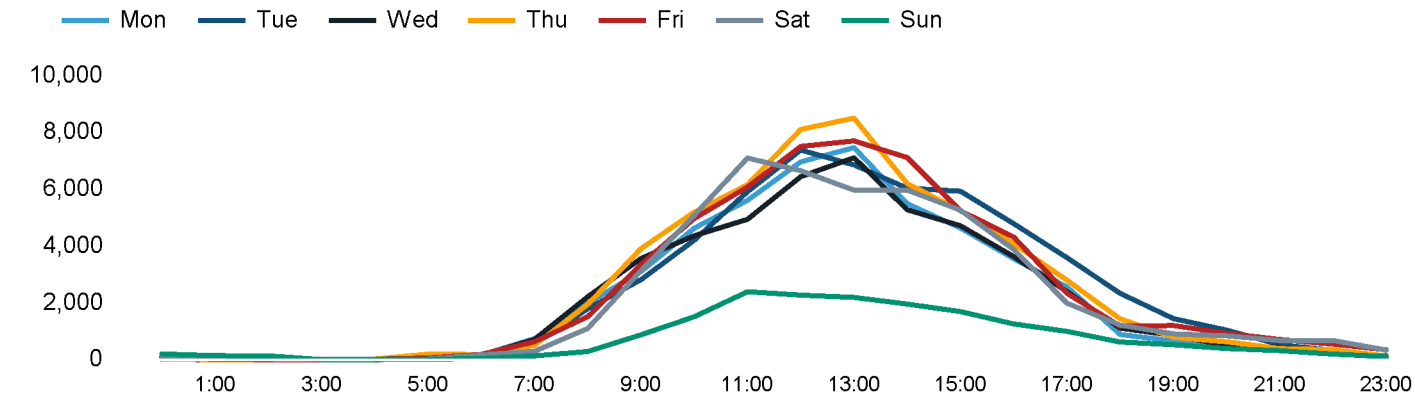
## Weather

	Mon	Tue	Wed	Thu	Fri	Sat	Sun
This week	23°	23°	25°	24°	23°	25°	21°
Previous week	21°	21°	24°	24°	24°	23°	23°
Previous year	29°	28°	29°	28°	26°	22°	22°

Footfall Counts by day



Footfall Counts by hour



## Footfall Counts by location

	This week	% share of total week	Previous week	Previous year	Week on week %	Year on year %	<div> <div>This week</div> <div>Previous week</div> <div>Prev Year</div> </div>
Commercial Arcade at High Street, Eastbound	25,437	7.5%	24,158	25,298	5.3%	0.5%	<div> <div></div> <div></div> <div></div> </div>
Commercial Arcade at High Street, Westbound	20,895	6.2%	19,982	21,476	4.6%	-2.7%	<div> <div></div> <div></div> <div></div> </div>
High Street at Commercial Arcade, Northbound	43,217	12.8%	41,083	43,112	5.2%	0.2%	<div> <div></div> <div></div> <div></div> </div>
High Street at Commercial Arcade, Southbound	45,503	13.4%	42,969	44,920	5.9%	1.3%	<div> <div></div> <div></div> <div></div> </div>
Market Square from Market Steps	49,170	14.5%	41,474	37,059	18.6%	32.7%	<div> <div></div> <div></div> <div></div> </div>
Market Square from the Arcade	23,241	6.9%	20,826	24,609	11.6%	-5.6%	<div> <div></div> <div></div> <div></div> </div>
Market Square from the Church	21,760	6.4%	19,573	19,722	11.2%	10.3%	<div> <div></div> <div></div> <div></div> </div>
The Pollet at High Street, Northbound	35,243	10.4%	35,110	36,108	0.4%	-2.4%	<div> <div></div> <div></div> <div></div> </div>
The Pollet at High Street, Southbound	36,452	10.8%	36,856	36,725	-1.1%	-0.7%	<div> <div></div> <div></div> <div></div> </div>
The Pollet at Smith Street, Eastbound	19,308	5.7%	18,885	36,725	2.2%	-47.4%	<div> <div></div> <div></div> <div></div> </div>
The Pollet at Smith Street, Westbound	18,700	5.5%	17,296	17,097	8.1%	9.4%	<div> <div></div> <div></div> <div></div> </div>

# Reporting dates

---

This week - 28 July 2025 - 03 August 2025

Year to Date % Change is the annual % change in footfall from January of this year compared to the same period last year. Week 1, 2025 to Week 31 , 2025 Vs Week 1, 2024 to Week 31 , 2024

Year on Year % Change is the % change in footfall for this week compared to the same week in the previous year. Week 31, 2025 Vs Week 31, 2024

Week on Week % Change is the % change in footfall for this week from the previous week. Week 31 2025 Vs Week 30 2025